

S.C. Brake Motor 60W (□90mm)

60W

Speed Control
Brake Motor
60W(□90mm)

Motor Specification

Model 9SBDG*-60F2□: Gear Type Shaft 9SBD*-60F2: D-Cut Type Shaft 9SBDK*-60F2: Key Type Shaft	Output W	Voltage V	Frequency Hz	Poles	Duty	Speed Range r/min	Starting Torque		Permissible Torque				Capacitor μF / VAC
									1200r/min		90r/min		
									kgfcm	N.m	kgfcm	N.m	
9SBDGA-60F2□	60	1∅110	60	4	30min.	90-1700	3.20	0.320	6.10	0.610	2.80	0.280	20.0 / 250
9SBDGD-60F2□	60	1∅220	60	4	30min.	90-1700	3.80	0.380	6.50	0.650	3.00	0.300	5.0 / 400
9SBDGE-60F2□	60	1∅220	50	4	30min.	90-1400	5.20	0.520	5.20	0.520	1.00	0.100	5.0 / 400
		1∅240					5.80	0.580	5.80	0.580	1.00	0.100	

1) Enter the phase & voltage code in the place * and enter the model type of attaching Gearbox in the box (□) within the motor model name.
 2) All models contain a built-in thermal protector.
 3) Gear Type Shaft are for attaching Gearbox and D-Cut & Key Type Shaft are for using motor only.

Max. Permissible Torque at Output Shaft of Gearbox

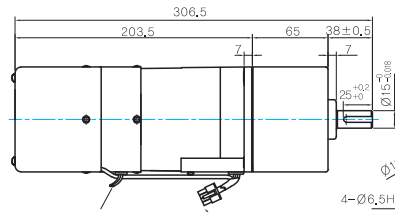
Motor Model	Gearbox Model	r/min	V	Hz	Gear Ratio	2	3	3.6	5	6	7.5	9	12.5	15	18	20
9SBDG□ -60F2P	9PBK□BH 9PFK□BH	1200	110	60	kgfcm N.m	10.1 0.99	15.2 1.49	18.2 1.79	25.3 2.48	30.4 2.98	38.0 3.72	45.6 4.47	57.2 5.60	68.6 6.73	82.4 8.07	83.0 8.13
			220	60	kgfcm N.m	10.8 1.06	16.2 1.59	19.4 1.90	27.0 2.64	32.4 3.17	40.5 3.97	48.6 4.76	60.9 5.97	73.1 7.17	87.8 8.60	88.4 8.66
			220/ 240	50	kgfcm N.m	9.6 0.94	14.4 1.42	17.3 1.70	24.1 2.36	28.9 2.83	36.1 3.54	43.3 4.25	54.4 5.33	65.3 6.39	78.3 7.67	78.9 7.73
		90	110	60	kgfcm N.m	4.6 0.46	7.0 0.68	8.4 0.82	11.6 1.14	13.9 1.37	17.4 1.71	20.9 2.05	26.3 2.57	31.5 3.09	37.8 3.70	38.1 3.73
			220	60	kgfcm N.m	5.0 0.49	7.5 0.73	9.0 0.88	12.5 1.22	14.9 1.46	18.7 1.83	22.4 2.20	28.1 2.76	33.8 3.31	40.5 3.97	40.8 4.00
			220/ 240	50	kgfcm N.m	1.7 0.16	2.5 0.24	3.0 0.29	4.2 0.41	5.0 0.49	6.2 0.61	7.5 0.73	9.4 0.92	11.3 1.10	13.5 1.32	13.6 1.33

Motor Model	Gearbox Model	r/min	V	Hz	Gear Ratio	25	30	36	40	50	60	75	90	100	120	150	180	200
9SBDG□ -60F2P	9PBK□BH 9PFK□BH	1200	110	60	kgfcm N.m	103.7 10.16	124.4 12.20	149.3 14.63	165.9 16.26	200.0 19.60	200.0 19.60	200.0 19.60	200.0 19.60	200.0 19.60	200.0 19.60	200.0 19.60	200.0 19.60	200.0 19.60
			220	60	kgfcm N.m	110.5 10.83	132.6 12.99	159.1 15.59	176.8 17.33	200.0 19.60	200.0 19.60	200.0 19.60	200.0 19.60	200.0 19.60	200.0 19.60	200.0 19.60	200.0 19.60	200.0 19.60
			220/ 240	50	kgfcm N.m	98.6 9.66	118.3 11.60	142.0 13.91	157.8 15.46	197.2 19.33	200.0 19.60	200.0 19.60	200.0 19.60	200.0 19.60	200.0 19.60	200.0 19.60	200.0 19.60	200.0 19.60
		90	110	60	kgfcm N.m	47.6 4.66	57.1 5.60	68.5 6.72	76.2 7.46	95.2 9.33	114.2 11.20	128.1 12.55	153.7 15.06	170.8 16.74	200.0 19.60	200.0 19.60	200.0 19.60	200.0 19.60
			220	60	kgfcm N.m	51.0 5.00	61.2 6.00	73.4 7.20	81.6 8.00	102.0 10.00	122.4 12.00	137.3 13.45	164.7 16.14	183.0 17.93	200.0 19.60	200.0 19.60	200.0 19.60	
			220/ 240	50	kgfcm N.m	17.0 1.67	20.4 2.00	24.5 2.40	27.2 2.67	34.0 3.33	40.8 4.00	45.8 4.48	54.9 5.38	61.0 5.98	73.2 7.17	91.5 8.97	109.8 10.76	109.8 10.76

GEARED MOTOR

● P TYPE GEARBOX

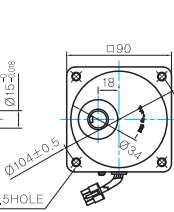
● MOTOR MODEL:
9SBDG□-60F2P (POWERFUL FAN)



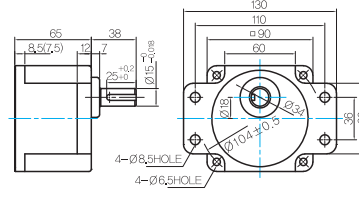
LEAD WIRE(Yellow) 300mm
UL STYLE NO,3398 AWG NO,22
380V OVER NO,3613 AWG NO,22

LEAD WIRE ASS'Y 300mm
MOTOR UL STYLE NO,3271 AWG NO,22
T,G UL STYLE NO,1430 AWG NO,24

● GEARBOX MODEL:
9PBK□BH



● GEARBOX MODEL:
9PFK□BH



● GEARBOX OUTPUT SHAFT

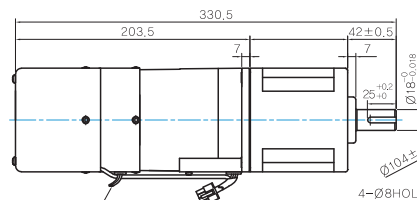
MODEL	SPEC
KEY TYPE	38 25±0,2 Ø16,5±0,08
9PBK□BH	
9PFK□BH	

● KEY SPEC

GEARBOX
3 3±0,1 25±0,2 Ø16,5±0,08

● H TYPE GEARBOX

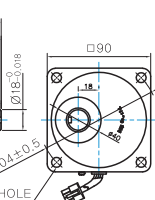
● MOTOR MODEL:
9SBDG□-60F2H (POWERFUL FAN)



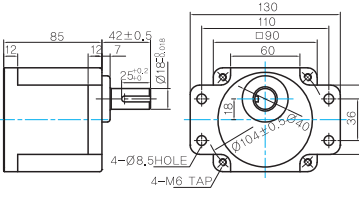
LEAD WIRE(Yellow) 300mm
UL STYLE NO,3398 AWG NO,22
380V OVER NO,3613 AWG NO,22

LEAD WIRE ASS'Y 300mm
MOTOR UL STYLE NO,3271 AWG NO,22
T,G UL STYLE NO,1430 AWG NO,24

● GEARBOX MODEL:
9HBK□BH



● GEARBOX MODEL:
9HFK□BH



● GEARBOX OUTPUT SHAFT

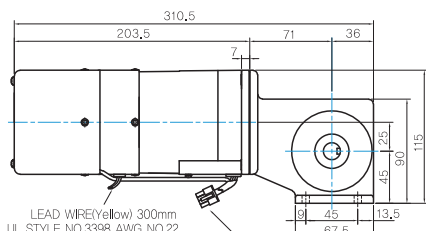
MODEL	SPEC
KEY TYPE	42 25±0,2 Ø16,5±0,08
9HBK□BH	
9HFK□BH	

● KEY SPEC

GEARBOX
3 3±0,1 25±0,2 Ø16,5±0,08

● W TYPE GEARBOX

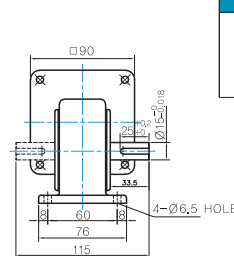
● MOTOR MODEL:
9SBDG□-60F2W (POWERFUL FAN)



LEAD WIRE(Yellow) 300mm
UL STYLE NO,3398 AWG NO,22
380V OVER NO,3613 AWG NO,22

LEAD WIRE ASS'Y 300mm
MOTOR UL STYLE NO,3271 AWG NO,22
T,G UL STYLE NO,1430 AWG NO,24

● GEARBOX MODEL:
9WD□BL/BR/BRL

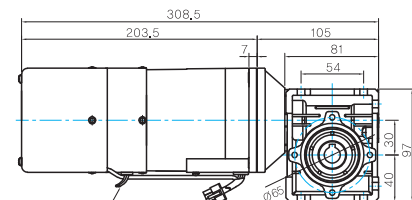


● KEY SPEC

GEARBOX
5 5±0,03 25±0,2

● WH TYPE GEARBOX

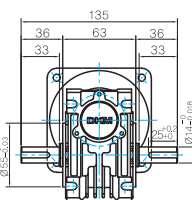
● MOTOR MODEL:
9SBDG□-60F2WH (POWERFUL FAN)



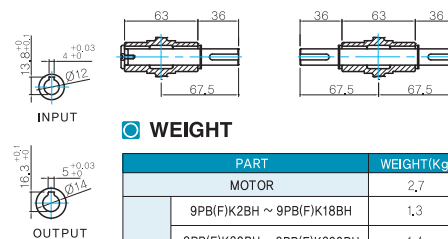
LEAD WIRE(Yellow) 300mm
UL STYLE NO,3398 AWG NO,22
380V OVER NO,3613 AWG NO,22

LEAD WIRE ASS'Y 300mm
MOTOR UL STYLE NO,3271 AWG NO,22
T,G UL STYLE NO,1430 AWG NO,24

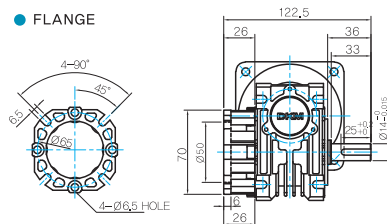
● GEARBOX MODEL:
9WHD□-030



● SHAFT(Unidirectional, Bi-directional)



● FLANGE



● KEY SPEC

GEARBOX
5 5±0,03 25±0,2

* The output flange and shafts are sold separately.

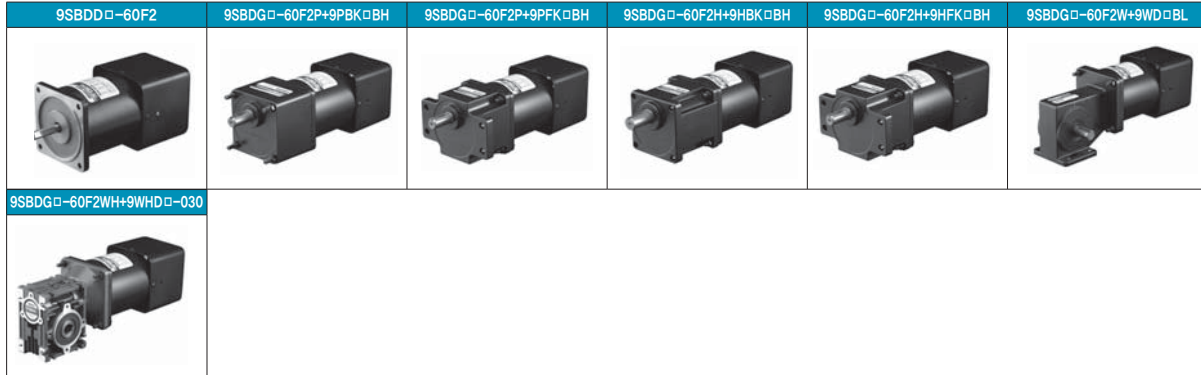
● WEIGHT

PART	WEIGHT(Kg)
MOTOR	2,7
9PB(F)K2BH ~ 9PB(F)K18BH	1,3
9PB(F)K20BH ~ 9PB(F)K200BH	1,4
9HB(F)K3BH ~ 9HB(F)K9BH	1,45
9HB(F)K12,5BH ~ 9HB(F)K18BH	1,5
9HB(F)K20BH ~ 9HB(F)K60BH	1,7
9HB(F)K75BH ~ 9HB(F)K200BH	1,8
9WD□BL/BR/BRL	1,0
9WHD□-030	1,13
9XD10□	0,5

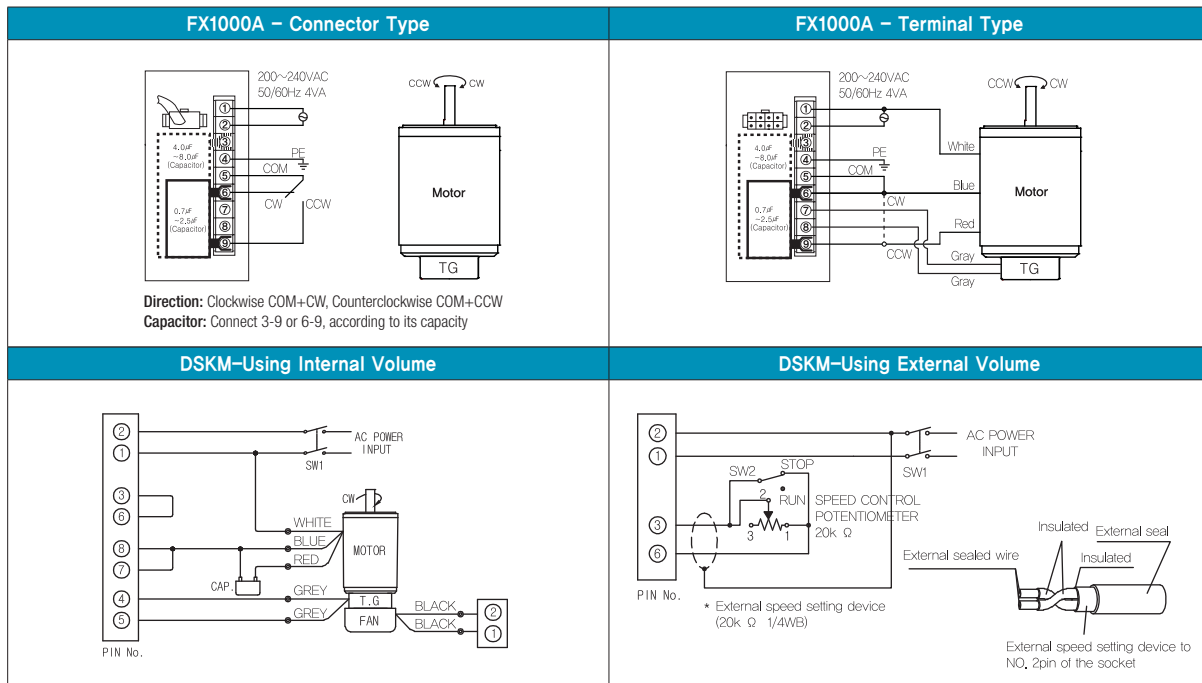
B AC Motors

S.C. Brake Motor 60W (□90mm)

Motor Images



Connection Diagrams



1) At first connect the speed controller with the motor as instructed in connection diagrams. And then input the external power to both of the terminal 'AC' for the rated speed operation.

Now you can adjust the main volume to control the output speed of motor.

2) The direction of motor rotation is as viewed from the shaft end of the motor.

3) CW represents the clockwise direction, while CCW represents the counterclockwise direction.

4) When using powerful fan (F2 type) attached motor, connect two black wires of the fan to No.1 and No.2 terminals in order to supply power.