

# B AC Motors

2 Pole Motor 60W(□90mm)

## 60W 2 Pole Motor 60W(□90mm)

### Motor Specification

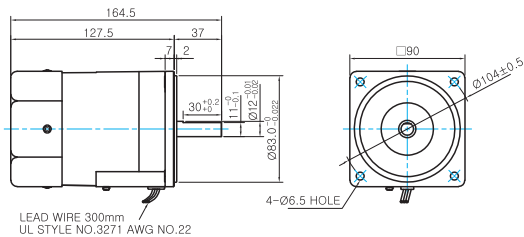
Model		Output W	Voltage V	Frequency Hz	Poles	Duty	Starting Torque		Rated Load			Capacitor μF / VAC	
9IDD□-60F-A(T): D-Cut Type Shaft 9IDK□-60F-A(T): Key Type Shaft	Lead Wire Type						Terminal Box Type	kgfcm	N.m	Speed r/min	Current A		Torque kgfcm N.m
9IDDA-60F-A	9IDDA-60F-AT	60	1φ110	60	2	Cont.	2.00	0.200	3200	1.20	1.84	0.184	16.0 / 250
9IDDD-60F-A	9IDDD-60F-AT	60	1φ220	60	2	Cont.	2.00	0.200	3200	0.65	1.84	0.184	5.0 / 450
9IDDE-60F-A	9IDDE-60F-AT	60	1φ220	50	2	Cont.	2.40	0.240	2700	0.89	2.20	0.220	5.0 / 450
			1φ240				2.80	0.280		1.10	2.40	0.240	
9IDDG-60F-A	9IDDG-60F-AT	60	3φ220	50	2	Cont.	8.00	0.800	2750	0.59	2.20	0.220	-
				60			6.00	0.600	3300	0.41	1.80	0.180	
9IDDK-60F-A	9IDDK-60F-AT	60	3φ380	50	2	Cont.	8.00	0.800	2700	0.34	2.20	0.220	-
				60			6.00	0.600	3250	0.26	1.80	0.180	
			3φ400	50	2	Cont.	9.00	0.900	2700	0.40	2.40	0.240	
				60			7.00	0.700	3250	0.27	2.00	0.200	
			3φ415	50	2	Cont.	10.00	1.000	2750	0.46	2.20	0.220	
				60			8.00	0.800	3300	0.29	1.80	0.180	
			3φ440	50	2	Cont.	12.00	1.200	2800	0.53	2.20	0.220	
				60			10.00	1.000	3350	0.31	1.80	0.180	

- 1) Enter the phase & voltage code in the box (□) within the motor model name.  
2) All models contain a built-in thermal protector.

### Dimensions

#### LEAD WIRE TYPE

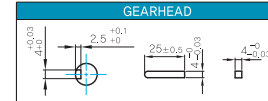
- MOTOR MODEL: 9IDD□-60F-A (GENERAL FAN)



#### MOTOR OUTPUT SHAFT

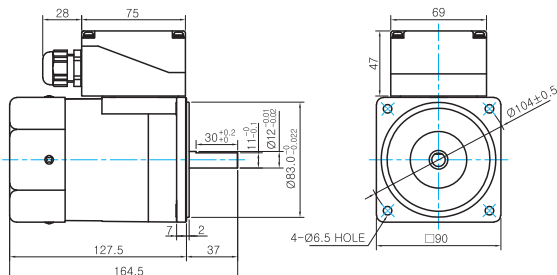
MODEL	SPEC
D-CUT TYPE	
KEY TYPE	

#### KEY SPEC



#### TERMINAL BOX TYPE

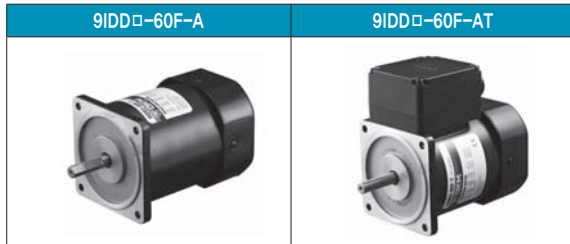
- MOTOR MODEL: 9IDD□-60F-AT (GENERAL FAN)



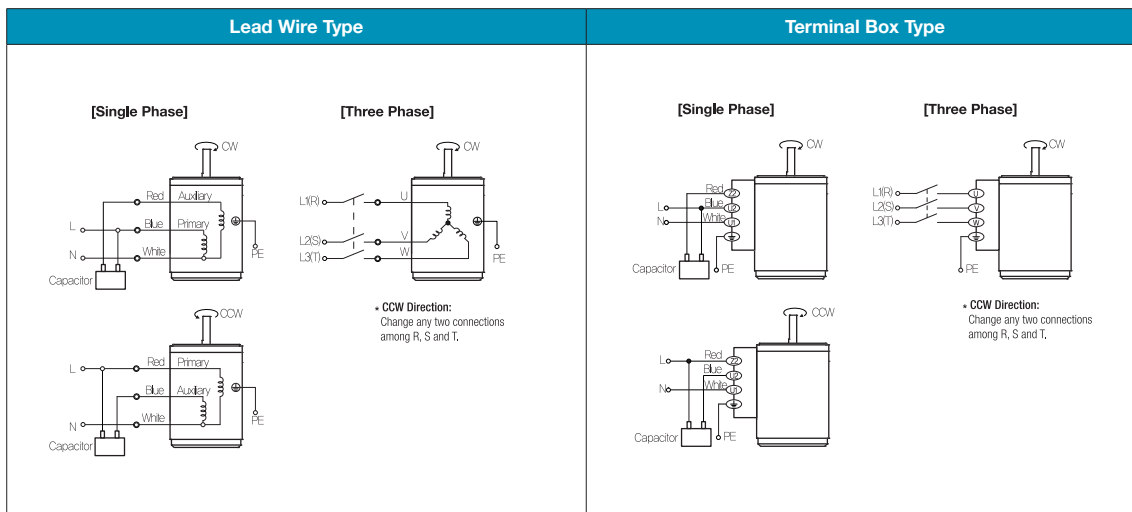
#### WEIGHT

PART	WEIGHT(Kg)
MOTOR	2.6

## Motor Images



## Connection Diagrams



- 1) The direction of motor rotation is as viewed from the shaft end of the motor.
- 2) CW represents the clockwise direction, while CCW represents the counterclockwise direction.
- 3) Change the direction of single phase motor rotation only after bringing the motor to a stop. If an attempt is made to change the direction of rotation while the motor is rotating, the motor may ignore the reversing command or change its direction after some delay.