

B AC Motors

2 Pole Motor 150W(□90mm)

150W

2 Pole Motor
150W(□90mm)

Motor Specification

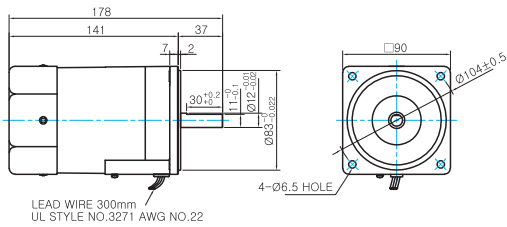
Model		Output W	Voltage V	Frequency Hz	Poles	Duty	Starting Torque		Rated Load			Capacitor μF / VAC	
9IDD□-150F-A(T): D-Cut Type Shaft	9IDK□-150F-A(T): Key Type Shaft						kgfcm	N.m	Speed r/min	Current A	Torque kgfcm N.m		
Lead Wire Type	Terminal Box Type												
9IDDG-150F-A	9IDDG-150F-AT	150	3∅220	50	2	Cont.	14.00	1.400	2650	1.40	5.60	0.560	-
				60			12.00	1.200	3250	0.86	4.60	0.460	
9IDDK-150F-A	9IDDK-150F-AT	150	3∅380	50	2	Cont.	1.40	0.140	2600	0.52	5.70	0.570	-
				60			1.20	0.120	3150	0.46	4.70	0.470	
			3∅400	50	2	Cont.	1.50	0.150	2600	0.60	5.90	0.590	
				60			1.30	0.130	3200	0.46	4.90	0.490	
			3∅415	50	2	Cont.	1.60	0.160	2700	0.60	5.60	0.560	
				60			1.40	0.140	3200	0.46	4.60	0.460	
			3∅440	50	2	Cont.	1.80	0.180	2700	0.68	5.80	0.580	
				60			1.60	0.160	3250	0.47	4.80	0.480	

- 1) Enter the phase & voltage code in the box (□) within the motor model name.
2) All models contain a built-in thermal protector.

Dimensions

LEAD WIRE TYPE

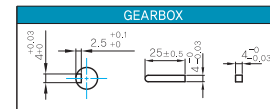
- MOTOR MODEL: 9IDD□-150F-A (GENERAL FAN)



MOTOR OUTPUT SHAFT

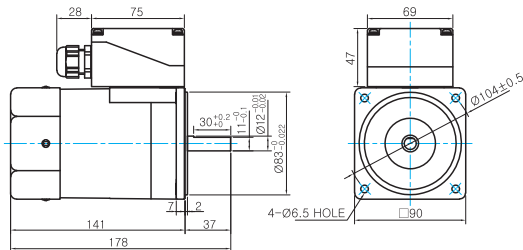
MODEL	SPEC
D-CUT TYPE	
9IDD□-150F-A	
KEY TYPE	
9IDK□-150F-A	

KEY SPEC



TERMINAL BOX TYPE

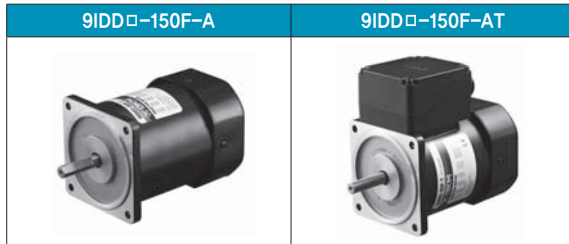
- MOTOR MODEL: 9IDD□-150F-AT (GENERAL FAN)



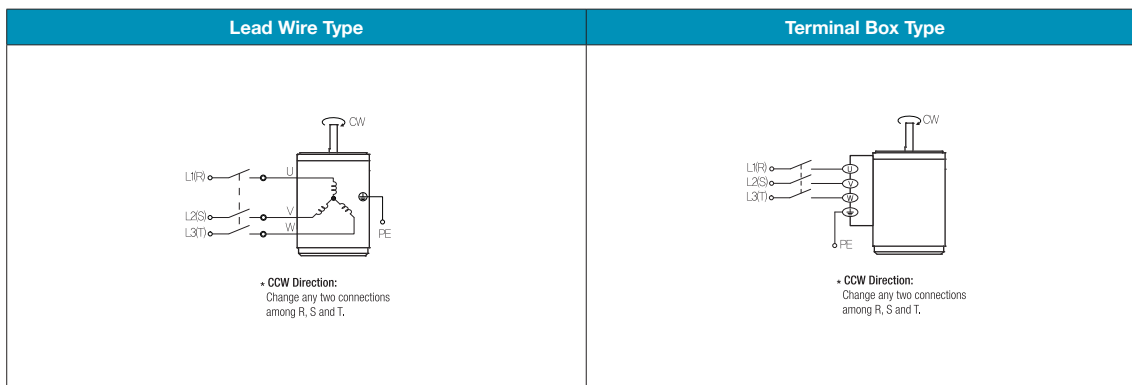
WEIGHT

PART	WEIGHT(Kg)
MOTOR	3,0

Motor Images



Connection Diagrams



- 1) The direction of motor rotation is as viewed from the shaft end of the motor.
- 2) CW represents the clockwise direction, while CCW represents the counterclockwise direction.