

B AC Motors

2 Pole Motor 40W(□90mm)

40W

 2 Pole Motor
40W(□90mm)

Motor Specification

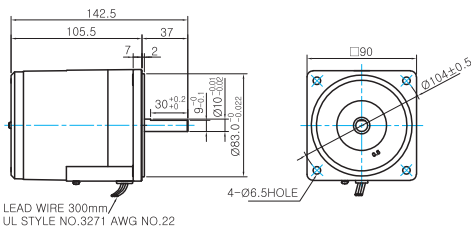
Model		Output W	Voltage V	Frequency Hz	Poles	Duty	Starting Torque		Rated Load			Capacitor μF / VAC		
9IDD□-40-A(T): D-Cut Type Shaft 9IDK□-40-A(T): Key Type Shaft	Lead Wire Type						Terminal Box Type	kgfcm	N.m	Speed r/min	Current A		Torque kgfcm N.m	
9IDDA-40-A	9IDDA-40-AT	40	1φ110	60	2	Cont.	1.60	0.160	3200	1.20	1.30	0.130	12.0 / 250	
9IDDD-40-A	9IDDD-40-AT	40	1φ220	60	2	Cont.	1.60	0.160	3200	0.45	1.30	0.130	4.0 / 250	
9IDDE-40-A	9IDDE-40-AT	40	1φ220 1φ240	50	2	Cont.	1.60	0.160	2650	0.54	1.50	0.150	4.0 / 450	
							1.80	0.180		0.55	1.70	0.170		
9IDDG-40-A	9IDDG-40-AT	40	3φ220	50	2	Cont.	4.00	0.400	2700	0.55	1.45	0.145	-	
				60			3.00	0.300	3300	0.40	1.20	0.120		
9IDDK-40-A	9IDDK-40-AT	40	□90	3φ380	50	2	Cont.	3.00	0.300	2700	0.32	1.45	0.145	-
					60			2.80	0.280	3300	0.23	1.20	0.120	
				3φ400	50	2	Cont.	3.20	0.320	2750	0.37	1.45	0.145	
					60			3.00	0.300	3300	0.26	1.40	0.140	
				3φ415	50	2	Cont.	3.40	0.340	2750	0.41	1.60	0.160	
					60			3.20	0.320	3350	0.27	1.30	0.130	
				3φ440	50	2	Cont.	3.70	0.370	2750	0.48	2.00	0.200	
					60			3.50	0.350	3350	0.29	1.70	0.170	

- 1) Enter the phase & voltage code in the box (□) within the motor model name.
- 2) All models contain a built-in thermal protector.

Dimensions

LEAD WIRE TYPE

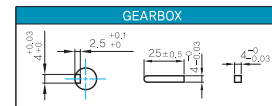
- MOTOR MODEL: 9IDD□-40-A (NO FAN)



MOTOR OUTPUT SHAFT

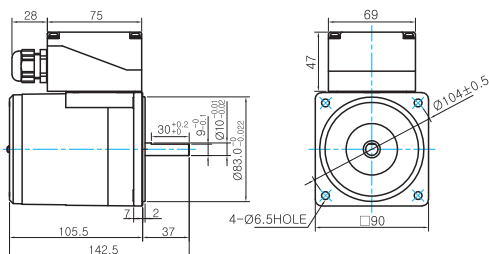
MODEL	SPEC
D-CUT TYPE	
9IDD□-40-A	
KEY TYPE	
9IDK□-40-A	

KEY SPEC



TERMINAL BOX TYPE

- MOTOR MODEL: 9IDDD□-40-AT (NO FAN)



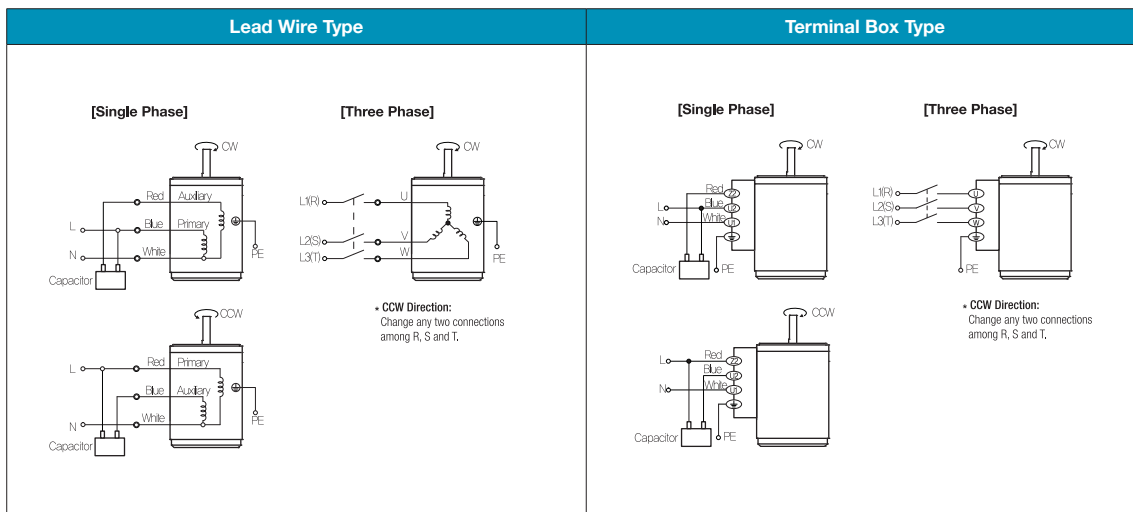
WEIGHT

PART	WEIGHT(Kg)
MOTOR	2,4

Motor Images



Connection Diagrams



- 1) The direction of motor rotation is as viewed from the shaft end of the motor.
- 2) CW represents the clockwise direction, while CCW represents the counterclockwise direction.
- 3) Change the direction of single phase motor rotation only after bringing the motor to a stop. If an attempt is made to change the direction of rotation while the motor is rotating, the motor may ignore the reversing command or change its direction after some delay.