

# B AC Motors

2 Pole Motor 25W(□80mm)

## 25W

2 Pole Motor  
25W(□80mm)

### Motor Specification

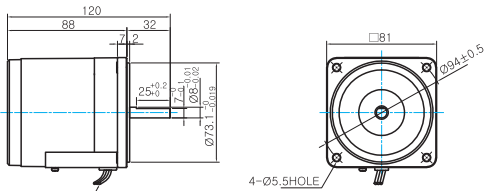
Model		Output W	Voltage V	Frequency Hz	Poles	Duty	Starting Torque		Rated Load			Capacitor μF / VAC	
8IDD□-25-A(T): D-Cut Type Shaft	Terminal Box Type						kgfcm	N.m	Speed r/min	Current A	Torque kgfcm N.m		
Lead Wire Type	Terminal Box Type												
8IDDA-25-A	8IDDA-25-AT	25	1φ110	60	2	Cont.	0.80	0.080	3200	0.44	0.76	0.076	6.0 / 250
8IDDD-25-A	8IDDD-25-AT	25	1φ220	60	2	Cont.	0.80	0.080	3200	0.31	0.77	0.077	2.5 / 250
8IDDE-25-A	8IDDE-25-AT	25	1φ220	50	2	Cont.	1.00	0.100	2500	0.33	1.00	0.100	2.5 / 450
			1φ240				1.20	0.120		0.36	1.10	0.110	
8IDDG-25-A	8IDDG-25-AT	25	3φ220	50	2	Cont.	1.40	0.140	2600	0.28	0.78	0.078	-
				60			1.30	0.130	3200	0.26	0.77	0.077	

- 1) Enter the phase & voltage code in the box (□) within the motor model name.  
2) All models contain a built-in thermal protector.

### Dimensions

#### LEAD WIRE TYPE

- MOTOR MODEL: 8IDD□-25-A (NO FAN)



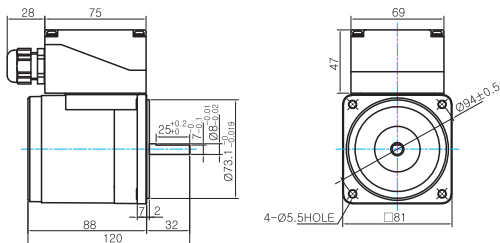
LEAD WIRE 300mm  
UL STYLE NO.3271 AWG NO.22

#### MOTOR OUTPUT SHAFT

MODEL	SPEC
D-CUT TYPE	

#### TERMINAL BOX TYPE

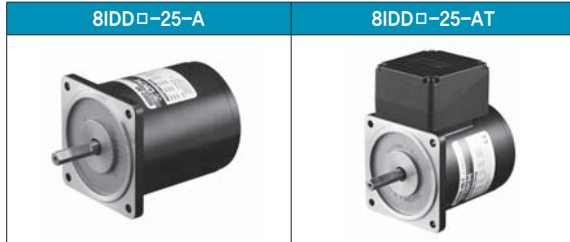
- MOTOR MODEL: 8IDD□-25-AT (NO FAN)



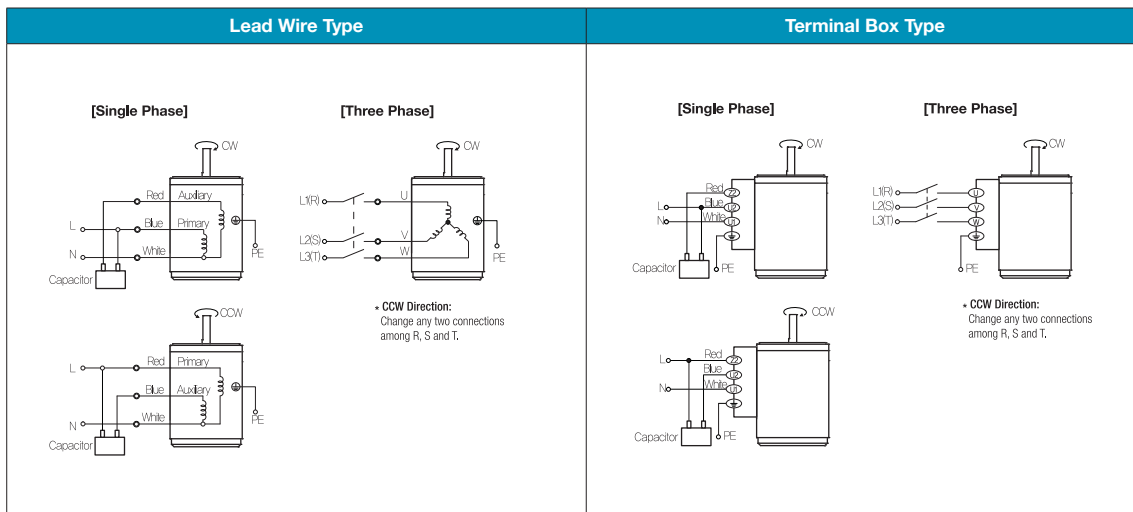
#### WEIGHT

PART	WEIGHT(Kg)
MOTOR	1.6

## Motor Images



## Connection Diagrams



- 1) The direction of motor rotation is as viewed from the shaft end of the motor.
- 2) CW represents the clockwise direction, while CCW represents the counterclockwise direction.
- 3) Change the direction of single phase motor rotation only after bringing the motor to a stop. If an attempt is made to change the direction of rotation while the motor is rotating, the motor may ignore the reversing command or change its direction after some delay.