

C DC Motors

DC Motor 15W(□60mm)

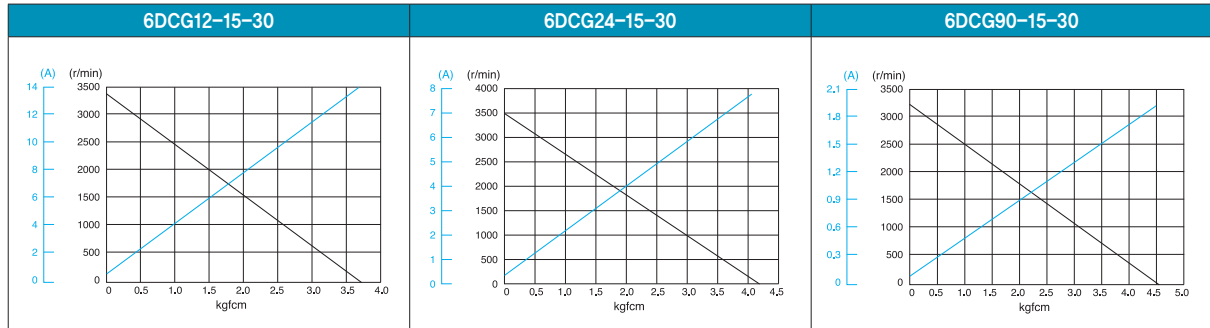
15W DC Motor 15W(□60mm)

Motor Specification

| Model 6DCG□-15-30: Gear Type Shaft 6DCD□-15-30: D-Cut Type Shaft | Output W | Voltage V | Starting Current A | Starting Torque | | No Load | | Rated Load | | | |
|--|-------------|--------------|-----------------------|-----------------|-------|--------------|----------------|--------------|----------------|---------------------|-------|
| | | | | kgfcm | N.m | Current A | Speed r/min | Current A | Speed r/min | Torque kgfcm N.m | |
| 6DCG12-15-30 | 15 | 12 | 13.50 | 3.70 | 0.370 | 0.60 | 3250 | 1.70 | 3000 | 0.49 | 0.049 |
| 6DCG24-15-30 | 15 | 24 | 7.70 | 4.10 | 0.410 | 0.40 | 3500 | 1.20 | 3000 | 0.49 | 0.049 |
| 6DCG90-15-30 | 15 | 90 | 1.90 | 4.50 | 0.450 | 0.06 | 3200 | 0.16 | 2900 | 0.49 | 0.049 |

- 1) Enter the phase & voltage code in the in the box (□) within the motor model name.
- 2) Gear Type Shaft are for attaching Gearbox and D-Cut Type Shaft are for using motor only.

Performance Curve



Max. Permissible Torque at Output Shaft of Gearbox

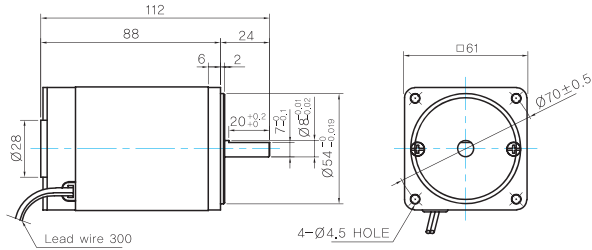
| Motor Model | Gearbox Model | Gear Ratio r/min | 3 | 3.6 | 5 | 6 | 7.5 | 9 | 10 | 12.5 | 15 | 18 | 20 | 25 | 30 | 36 | 40 | 50 | 60 | 75 | 90 | 100 | 120 | 150 | 180 | 200 | 250 | | | | |
|-----------------|---------------|---------------------|-------|------|------|------|------|------|------|------|------|------|------|------|------|------|------|------|------|------|------|------|------|------|------|------|------|------|------|------|------|
| | | | 1000 | 833 | 600 | 500 | 400 | 333 | 300 | 240 | 200 | 167 | 150 | 120 | 100 | 83 | 75 | 60 | 50 | 40 | 33 | 30 | 25 | 20 | 17 | 15 | 12 | | | | |
| 6DCG□ -15-30 | 6GBD□ MH | Rated | kgfcm | 1.2 | 1.5 | 2.0 | 2.4 | 3.1 | 3.7 | 4.1 | 5.1 | 6.1 | 7.3 | 7.4 | 9.2 | 11.0 | 13.2 | 14.7 | 16.7 | 20.0 | 25.0 | 30.0 | 30.0 | 30.0 | 30.0 | 30.0 | 30.0 | 30.0 | 30.0 | | |
| | | N.m | 0.12 | 0.14 | 0.20 | 0.24 | 0.30 | 0.36 | 0.40 | 0.50 | 0.60 | 0.72 | 0.72 | 0.90 | 1.08 | 1.30 | 1.44 | 1.63 | 1.96 | 2.45 | 2.94 | 2.94 | 2.94 | 2.94 | 2.94 | 2.94 | 2.94 | 2.94 | 2.94 | | |
| | | 12V | kgfcm | 9.2 | 11.1 | 15.4 | 18.4 | 23.0 | 27.6 | 30.0 | 30.0 | 30.0 | 30.0 | 30.0 | 30.0 | 30.0 | 30.0 | 30.0 | 30.0 | 30.0 | 30.0 | 30.0 | 30.0 | 30.0 | 30.0 | 30.0 | 30.0 | 30.0 | 30.0 | 30.0 | 30.0 |
| | | N.m | 0.90 | 1.08 | 1.50 | 1.81 | 2.26 | 2.71 | 2.94 | 2.94 | 2.94 | 2.94 | 2.94 | 2.94 | 2.94 | 2.94 | 2.94 | 2.94 | 2.94 | 2.94 | 2.94 | 2.94 | 2.94 | 2.94 | 2.94 | 2.94 | 2.94 | 2.94 | 2.94 | 2.94 | |
| | | 24V | kgfcm | 10.2 | 12.3 | 17.0 | 20.4 | 25.5 | 30.0 | 30.0 | 30.0 | 30.0 | 30.0 | 30.0 | 30.0 | 30.0 | 30.0 | 30.0 | 30.0 | 30.0 | 30.0 | 30.0 | 30.0 | 30.0 | 30.0 | 30.0 | 30.0 | 30.0 | 30.0 | 30.0 | 30.0 |
| | | N.m | 1.00 | 1.20 | 1.67 | 2.00 | 2.50 | 2.94 | 2.94 | 2.94 | 2.94 | 2.94 | 2.94 | 2.94 | 2.94 | 2.94 | 2.94 | 2.94 | 2.94 | 2.94 | 2.94 | 2.94 | 2.94 | 2.94 | 2.94 | 2.94 | 2.94 | 2.94 | 2.94 | 2.94 | 2.94 |
| 90V | kgfcm | 11.2 | 13.4 | 18.7 | 22.4 | 28.0 | 30.0 | 30.0 | 30.0 | 30.0 | 30.0 | 30.0 | 30.0 | 30.0 | 30.0 | 30.0 | 30.0 | 30.0 | 30.0 | 30.0 | 30.0 | 30.0 | 30.0 | 30.0 | 30.0 | 30.0 | 30.0 | 30.0 | 30.0 | | |
| N.m | 1.10 | 1.32 | 1.83 | 2.20 | 2.75 | 2.94 | 2.94 | 2.94 | 2.94 | 2.94 | 2.94 | 2.94 | 2.94 | 2.94 | 2.94 | 2.94 | 2.94 | 2.94 | 2.94 | 2.94 | 2.94 | 2.94 | 2.94 | 2.94 | 2.94 | 2.94 | 2.94 | 2.94 | 2.94 | | |

- 1) Enter the phase & voltage code in the box (□) within the motor model name.
- 2) Enter the gear ratio in the box (□) within the Gearbox model name.
- 3) A colored background indicates gear shaft rotation in the same direction as the motor shaft; a white background indicates rotation in the opposite direction.
- 4) The rotating speed is calculated by dividing the motor's synchronous speed (50Hz: 1,500r/min, 60Hz: 1,800r/min) by the gear ratio.
The actual speed is 2~20% less than the displayed value, depending on the size of the load.

Dimensions

MOTOR ONLY

- MOTOR MODEL: 6DCD□-15-30



MOTOR OUTPUT SHAFT

| MODEL | SPEC |
|------------|------|
| D-CUT TYPE | |

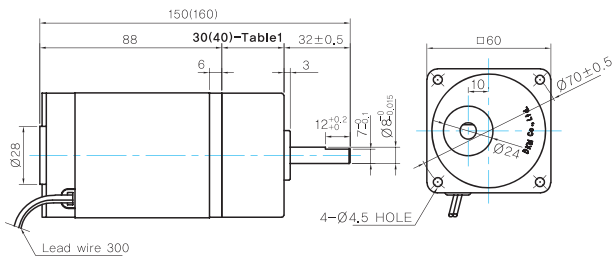
GEARED MOTOR

G TYPE GEARBOX

- MOTOR MODEL:
6DCG□-15-30

- GEARBOX MODEL:
6GBD□MH

GEARBOX OUTPUT SHAFT



| MODEL | SPEC |
|------------|------|
| D-CUT TYPE | |

WEIGHT

| PART | WEIGHT(Kg) |
|-------------------------|------------|
| MOTOR | 0,7 |
| GEAR BOX | |
| 6GBD3MH ~ 6GBD18MH | 0,3 |
| 6GBD20MH ~ 6GBD40MH | 0,32 |
| 6GBD50MH ~ 6GBD250MH | 0,34 |

30(40)-Table1

| SIZE(mm) | GEAR RATIO |
|----------|----------------------|
| 30 | 6GBD3MH - 6GBD18MH |
| 40 | 6GBD20MH - 6GBD250MH |

Motor Images

