

Induction Motor 250W(□104mm)

300W Induction Motor 300W(□104mm)

Induction Motor 300W(□104mm)

Motor Specification

Model		Output W	Voltage V	Frequency Hz	Poles	Duty	Starting Torque		Rated Load			Capacitor μF / VAC	
Lead Wire Type	Terminal Box Type						kgfcm N.m	Speed r/min	Current A	Torque kgfcm N.m			
-	10IDGD-300F□-T	300	1Ø 220	60	4	Cont.	13.60	1.360	1600	2.52	18.27	1.827	15.0 / 450
-	10IDG7-300F□-T	300	3Ø 230	50	4	Cont.	47.00	4.700	1300	1.70	22.48	2.248	-
			3Ø 400				47.00	4.700	1300	1.01	22.48	2.248	
-	10IDG8-300F□-T	300	3Ø 440	50	4	Cont.	47.00	4.700	1300	0.88	22.48	2.248	-
				60			35.00	3.500	1550	0.88	18.86	1.886	

1) Enter the phase & voltage code in the place * and enter the model type of attaching gearbox in the box (□) within the motor model name.

2) voltage code E & D contain a built-in thermal protector.

3) Gear Type Shaft is for attaching gearbox and D-Cut & Key Type Shafts are for using motor only.

Max. Permissible Torque at Output Shaft of Gearbox

50Hz

Motor Model	Gearbox Model	Ratio	3	3.6	5	6	7.5	9	10	12.5	15	18	20	25	30	36	40	50	60	75	90	100	120	150	180
10IDG7-300FU-T	10UBK	r/min	600	500	360	300	240	200	180	144	120	100	90	72	60	50	45	36	30	24	20	18	15	12	10
10IDG8-300FU-T	□BH	kgfcm N.m	55 5.4	70 6.9	95 9.3	110 11	140 14	170 17	170 17	210 21	250 25	270 26	300 29	300 29	350 29	350 34	350 34	400 39	400 39	400 39	400 39	400 39	400 39	400 39	400 39

Motor Model	Gearbox Model	Gear Ratio	7.5	10	15	20	25	30	40	50	60	80	100
10IDG7-300FWH-T	10WHD□-040	r/min	200	150	100	75	60	50	37.5	30	25	18.75	15
10IDG8-300FWH-T		kgfcm N.m	95 9.30	125 12.20	175 17.10	225 22.00	270 26.40	300 29.40	285 27.90	*	*	*	*

60Hz

Motor Model	Gearbox Model	Ratio	3	3.6	5	6	7.5	9	10	12.5	15	18	20	25	30	36	40	50	60	75	90	100	120	150	180
10IDGD-300FU-T	10UBK	r/min	600	500	360	300	240	200	180	144	120	100	90	72	60	50	45	36	30	24	20	18	15	12	10
10IDG8-300FU-T	□BH	kgfcm N.m	45 4.41	55 5.39	75 7.35	90 8.82	115 11.27	135 13.23	140 13.72	170 16.66	205 20.09	225 22.05	250 24.5	300 29.4	300 29.4	350 34.3	350 34.3	350 34.3	400 39.2	400 39.2	400 39.2	400 39.2	400 39.2	400 39.2	400 39.2

Motor Model	Gearbox Model	Gear Ratio	7.5	10	15	20	25	30	40	50	60	80	100
10IDGD-300FWH-T	10WHD□-040	r/min	200	150	100	75	60	50	37.5	30	25	18.75	15
10IDG8-300FWH-T		kgfcm N.m	115 11.20	150 14.70	215 21.00	275 26.90	335 32.80	375 36.70	350 34.30	*	*	*	*

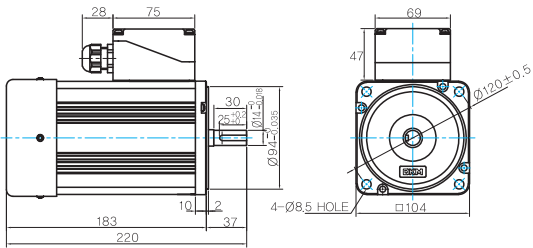
B AC Motors

Induction Motor 300W(□104mm)

Dimensions

MOTOR ONLY

MOTOR MODEL:
10IDG□-300F-T



MOTOR OUTPUT SHAFT

MODEL	SPEC
KEY TYPE	

KEY SPEC

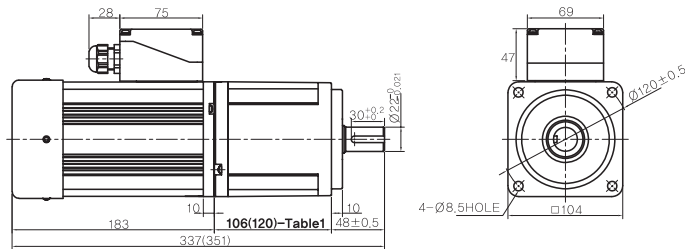
MOTOR

GEARED MOTOR

U TYPE GEARBOX

MOTOR MODEL:
10IDG□-300FU-T

GEARBOX MODEL:
10UBK□BH-040



GEARBOX OUTPUT SHAFT

MODEL	SPEC
KEY TYPE	

KEY SPEC

GEARBOX

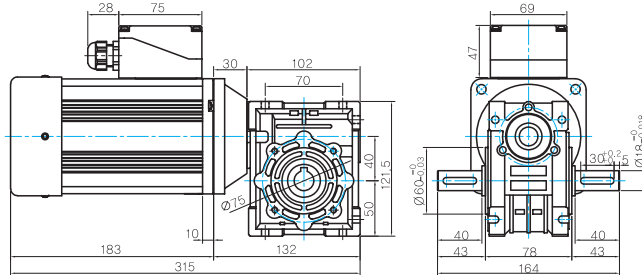
106(120)-Table1

SIZE(mm)	GEAR RATIO
106	10UBK3BH ~ 10UBK60BH
120	10UBK75BH ~ 10UBK180BH

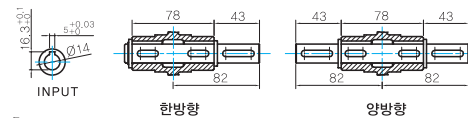
WH TYPE GEARBOX

MOTOR MODEL:
10IDG□-300FWH-T

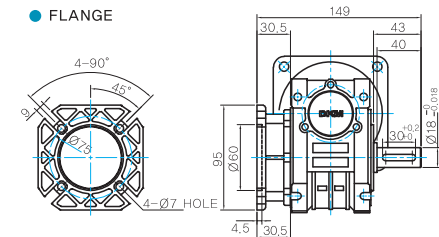
GEARBOX MODEL:
10WHD□-040



SHAFT



FLANGE



KEY SPEC

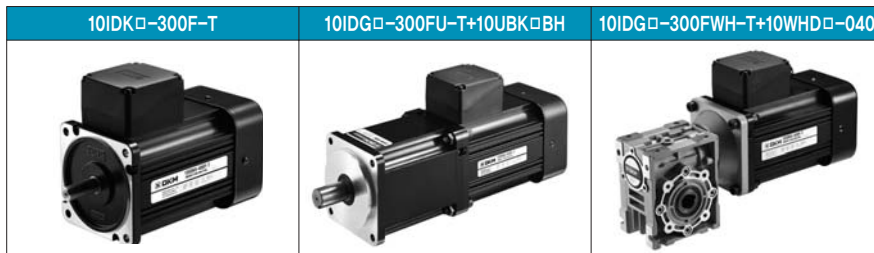
GEARBOX

WEIGHT

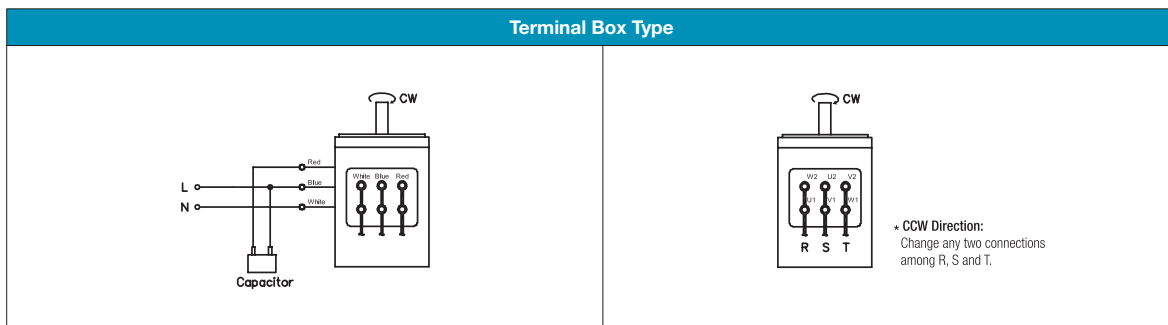
PART	WEIGHT(kg)	
MOTOR	6.1	
GEAR BOX	10UBK3BH ~ 10UBK10BH	2.1
	10UBK12.5BH ~ 10UBK18BH	2.15
	10UBK20BH ~ 10UBK60BH	2.2
	10UBK75BH ~ 10UBK200BH	2.3
10WHD□-040	2.2	

* 출력 FLANGE와 SHAFT는 별매입니다.

Motor Images



Connection Diagrams



- 1) The direction of motor rotation is as viewed from the shaft end of the motor.
- 2) CW represents the clockwise direction, while CCW represents the counterclockwise direction.