

B AC Motors

2 Pole Motor 15W(□80mm)

15W

2 Pole Motor
15W(□80mm)

Motor Specification

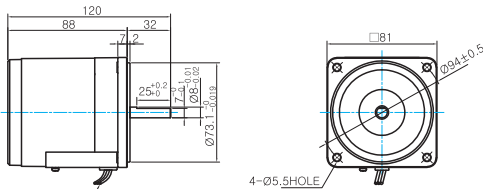
Model		Output W	Voltage V	Frequency Hz	Poles	Duty	Starting Torque		Rated Load			Capacitor μF / VAC	
8IDD□-15-A(T): D-Cut Type Shaft							kgfcm	N.m	Speed r/min	Current A	Torque kgfcm N.m		
Lead Wire Type	Terminal Box Type												
8IDDA-15-A	8IDDA-15-AT	15	1∅110	60	2	Cont.	0.60	0.060	3250	0.41	0.46	0.046	6.0 / 250
8IDDD-15-A	8IDDD-15-AT	15	1∅220	60	2	Cont.	0.60	0.060	3200	0.26	0.46	0.046	2.0 / 250
8IDDE-15-A	8IDDE-15-AT	15	1∅220	50	2	Cont.	0.60	0.060	2550	0.28	0.60	0.060	2.0 / 450
			1∅240				0.80	0.080		0.30	0.70	0.070	
8IDDG-15-A	8IDDG-15-AT	15	3∅220	50	2	Cont.	1.30	0.130	2600	0.27	0.60	0.060	-
				60			1.20	0.120	3200	0.25	0.46	0.046	

- 1) Enter the phase & voltage code in the box (□) within the motor model name.
2) All models contain a built-in thermal protector.

Dimensions

LEAD WIRE TYPE

- MOTOR MODEL: 8IDD□-15-A (NO FAN)



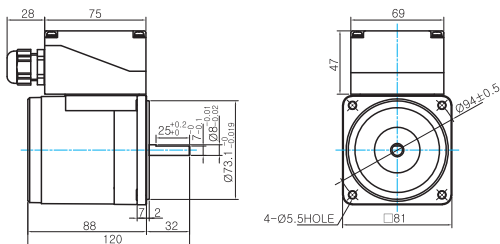
LEAD WIRE 300mm
UL STYLE NO.3271 AWG NO.22

MOTOR OUTPUT SHAFT

MODEL	SPEC
D-CUT TYPE	

TERMINAL BOX TYPE

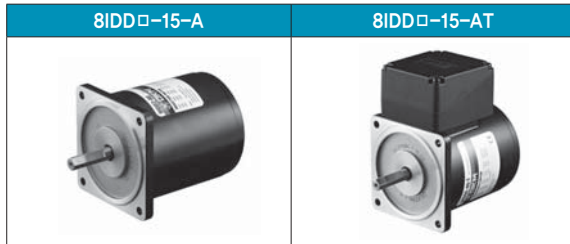
- MOTOR MODEL: 8IDD□-15-AT (NO FAN)



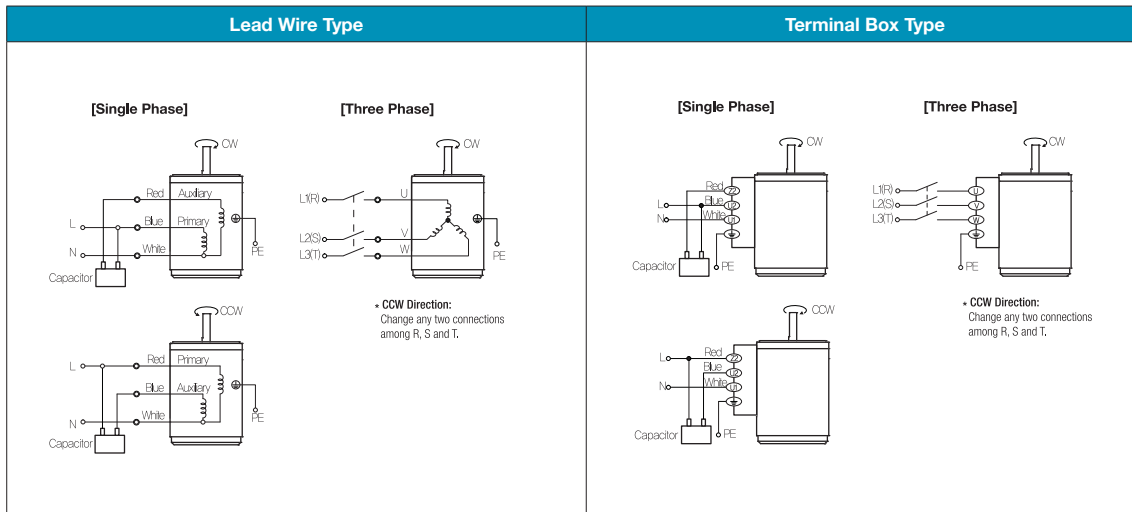
WEIGHT

PART	WEIGHT(Kg)
MOTOR	1.6

Motor Images



Connection Diagrams



- 1) The direction of motor rotation is as viewed from the shaft end of the motor.
- 2) CW represents the clockwise direction, while CCW represents the counterclockwise direction.
- 3) Change the direction of single phase motor rotation only after bringing the motor to a stop. If an attempt is made to change the direction of rotation while the motor is rotating, the motor may ignore the reversing command or change its direction after some delay.