

B AC Motors

Induction Motor 250W(□104mm)

250W

Induction Motor
250W(□104mm)

Motor Specification

Model		Output	Voltage	Frequency	Poles	Duty	Starting Torque		Rated Load				Capacitor
Lead Wire Type	Terminal Box Type						W	V	Hz	kgfcm	N.m	Speed r/min	
		kgfcm	N.m										
-	10IDGE-250F □-T	250	1Ø 220	50	4	Cont.	11.00	1.100	1250	2.29	19.48	1.948	13.0/450
			1Ø 240				13.50	1.350			1300	2.17	

- 1) Enter the phase & voltage code in the place * and enter the model type of attaching gearbox in the box (□) within the motor model name.
 2) voltage code E & D contain a built-in thermal protector.
 3) Gear Type Shaft is for attaching gearbox and D-Cut & Key Type Shafts are for using motor only.

Max. Permissible Torque at Output Shaft of Gearbox

50Hz

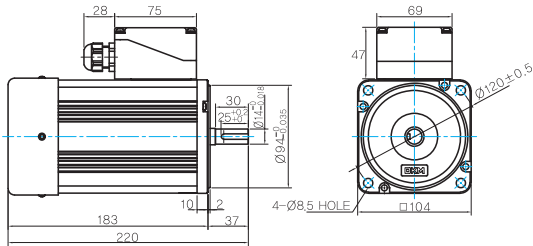
Motor Model	Gearbox Model	Ratio	3	3.6	5	6	7.5	9	10	12.5	15	18	20	25	30	36	40	50	60	75	90	100	120	150	180
10IDGE-250FU-T	10UBK □ BH	r/min	600	500	360	300	240	200	180	144	120	100	90	72	60	50	45	36	30	24	20	18	15	12	10
		kgfcm	50	60	80	100	120	145	150	185	220	240	270	300	300	350	350	350	400	400	400	400	400	400	400
		N.m	4.9	5.9	7.8	9.8	12	14	15	18	22	24	26	29	29	34	34	34	39	39	39	39	39	39	39

Motor Model	Gearbox Model	Gear Ratio	7.5	10	15	20	25	30	40	50	60	80	100
10IDGE-250WH-T	10WHD □-040	r/min	200	150	100	75	60	50	37.5	30	25	18.75	15
		kgfcm	100	130	190	240	290	325	305	*	*	*	*
		N.m	9.8	12.7	18.6	23.5	28.4	31.8	29.9	*	*	*	*

Dimensions

MOTOR ONLY

- MOTOR MODEL:
10IDK□-250F-T



- MOTOR OUTPUT SHAFT

MODEL	SPEC
KEY TYPE	

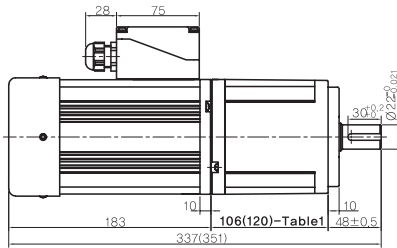
- KEY SPEC

MOTOR

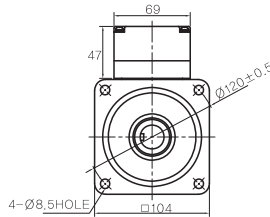
GEARED MOTOR

U TYPE GEARBOX

- MOTOR MODEL:
10IDG□-250FU-T



- GEARBOX MODEL:
10UBK□BH



- GEARBOX OUTPUT SHAFT

MODEL	SPEC
KEY TYPE	

- KEY SPEC

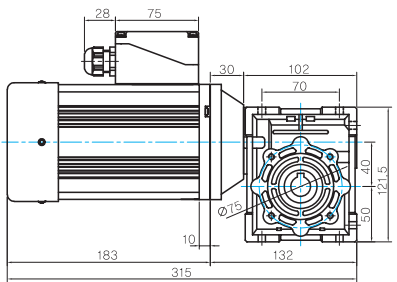
GEARBOX

- 106(120)-Table1

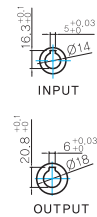
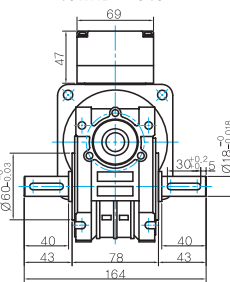
SIZE(mm)	GEAR RATIO
106	10UBK3BH - 10UBK60BH
120	10UBK75BH - 10UBK180BH

WH TYPE GEARBOX

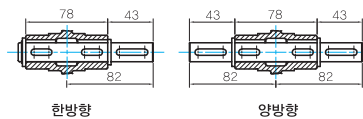
- MOTOR MODEL:
10IDG□-250FWH-T



- GEARBOX MODEL:
10WHD□-040



- SHAFT



한방향

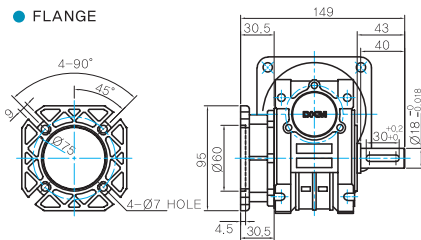
양방향

- WEIGHT

PART		WEIGHT(Kg)
MOTOR		6.1
GEAR BOX	10UBK3BH ~ 10UBK10BH	2.1
	10UBK12.5BH ~ 10UBK18BH	2.15
	10UBK20BH ~ 10UBK60BH	2.2
	10UBK75BH ~ 10UBK200BH	2.3
	10WHD□-040	2.2

* 출력 FLANGE와 SHAFT는 별매입니다.

- FLANGE



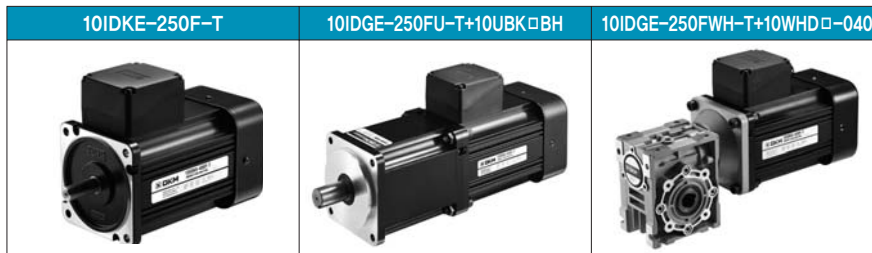
- KEY SPEC

GEARBOX

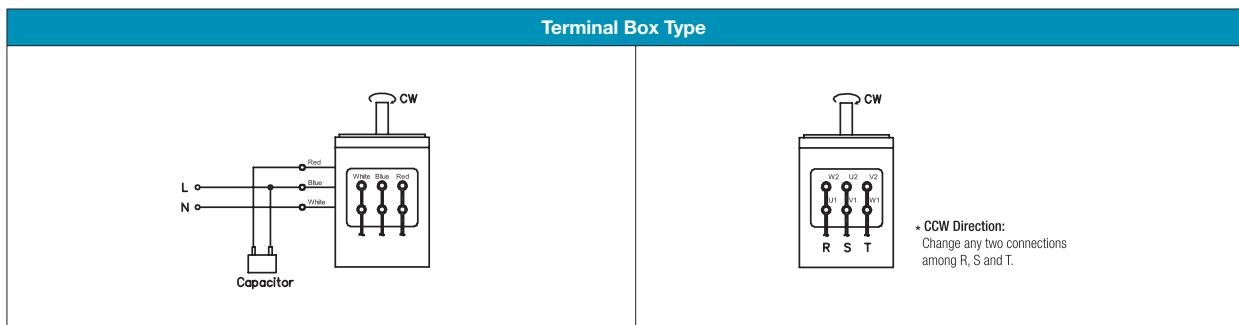
B AC Motors

Induction Motor 250W(□104mm)

Motor Images



Connection Diagrams



- 1) The direction of motor rotation is as viewed from the shaft end of the motor.
- 2) CW represents the clockwise direction, while CCW represents the counterclockwise direction.