

B AC Motors

2 Pole Motor 120W(□90mm)

120W

2 Pole Motor
120W(□90mm)

Motor Specification

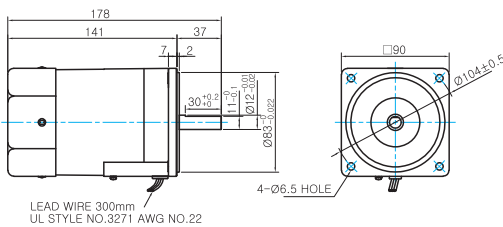
Model		Output W	Voltage V	Frequency Hz	Poles	Duty	Starting Torque		Rated Load			Capacitor μF / VAC	
9IDD□-120F-A(T): D-Cut Type Shaft 9IDK□-120F-A(T): Key Type Shaft	Lead Wire Type						Terminal Box Type	kgfcm	N.m	Speed r/min	Current A		Torque kgfcm N.m
9IDDA-120F-A	9IDDA-120F-AT	120	1φ110	60	2	Cont.	3.00	0.300	3100	2.40	3.80	0.380	25.0 / 250
9IDDD-120F-A	9IDDD-120F-AT	120	1φ220	60	2	Cont.	3.00	0.300	3100	1.40	3.80	0.380	6.5 / 450
9IDDE-120F-A	9IDDE-120F-AT	120	1φ220	50	2	Cont.	3.20	0.320	2500	1.20	4.70	0.470	6.5 / 450
			1φ240				3.80	0.380		1.40	5.20	0.520	
9IDDG-120F-A	9IDDG-120F-AT	120	3φ220	50	2	Cont.	12.00	1.200	2650	0.82	4.45	0.445	-
				60			10.00	1.000	3250	0.60	3.60	0.360	
9IDDK-120F-A	9IDDK-120F-AT	120	3φ380	50	2	Cont.	12.00	1.200	2650	0.46	4.60	0.460	-
				60			10.00	1.000	3200	0.35	3.65	0.365	
			3φ400	50	2	Cont.	13.00	1.300	2700	0.53	4.40	0.440	
				60			11.00	1.100	3200	0.38	3.85	0.385	
			3φ415	50	2	Cont.	14.00	1.400	2700	0.60	4.60	0.460	
				60			12.00	1.200	3250	0.41	3.65	0.365	
3φ440	50	2	Cont.	16.00	1.600	2750	0.68	4.30	0.430				
	60			14.00	1.400	3250	0.45	3.80	0.380				

- 1) Enter the phase & voltage code in the box (□) within the motor model name.
2) All models contain a built-in thermal protector.

Dimensions

LEAD WIRE TYPE

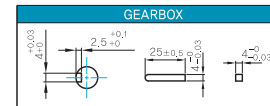
- MOTOR MODEL: 9IDD□-120F-A (GENERAL FAN)



MOTOR OUTPUT SHAFT

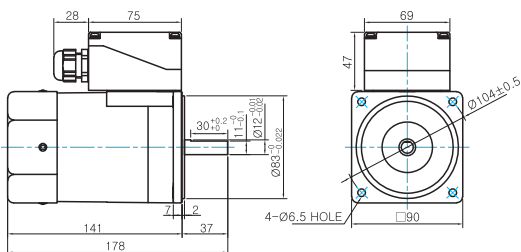
MODEL	SPEC
D-CUT TYPE	
9IDD□-120F-A	
KEY TYPE	
9IDK□-120F-A	

KEY SPEC



TERMINAL BOX TYPE

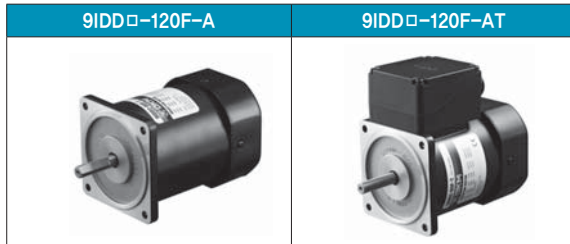
- MOTOR MODEL: 9IDDD□-120F-AT (GENERAL FAN)



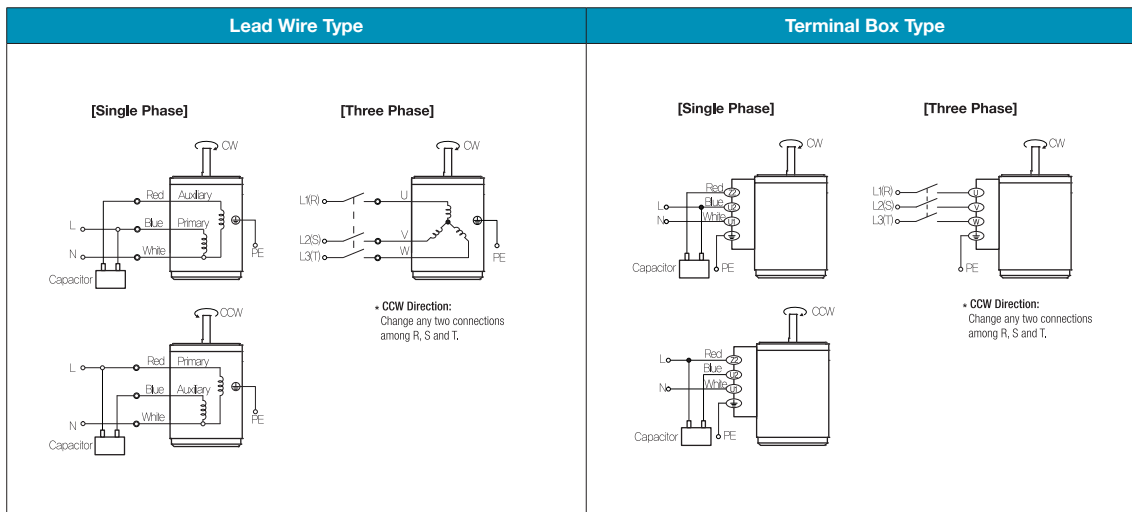
WEIGHT

PART	WEIGHT(Kg)
MOTOR	3.0

Motor Images



Connection Diagrams



- 1) The direction of motor rotation is as viewed from the shaft end of the motor.
- 2) CW represents the clockwise direction, while CCW represents the counterclockwise direction.
- 3) Change the direction of single phase motor rotation only after bringing the motor to a stop. If an attempt is made to change the direction of rotation while the motor is rotating, the motor may ignore the reversing command or change its direction after some delay.